

# Rohypnol

By: Sharilynn T. Langidrik & Tior Calep



# WHAT DOES THE DRUG LOOK LIKE?

---

Most commonly found in a tablet form. It may be a small, round, white pill, or it may be oval-shaped and green-gray in color.



# Paraphernalia Associated with the use of Rohypnol

---

- Drinking Glass
- Pen shells
- Rolled money
- Mortar and pestle
- Razor blades



# Short-term Effects of the Drug

---

- The drug creates a sleepy, relaxed, and drunk feeling that lasts to 2-8 hours.
- blackouts, with a complete loss of memory
- dizziness
- respiratory depression and disorientation
- nausea
- difficulty with motor movements and speaking.

# How does it Affect the Body?

---

The physical effects of the drug may be noticeable within twenty to thirty minutes after ingestion. The effects may last for many hours.

Rohypnol may cause drowsiness, confusion, impaired motor skills, dizziness, disorientation, disinhibition, impaired judgment, and reduced levels of consciousness. You may look and act like someone who is drunk. Your speech may be slurred, and you may have difficulty standing or walking.

# Long Term Effects on the Body

---

Produces physical and psychological dependence



# How is the Drug Analyzed and Identified?

---

Identification- Some rohypnol will turn a light colored or clear liquid blue when it is dissolved but the generic version of the drug will appear clear, tasteless, and odorless when dissolved in in a drink

A new method called Undercover Colors is still under development but when completed women will detect if their drink is drugged if the nail polish on their finger changes color as they dip and stir their drink



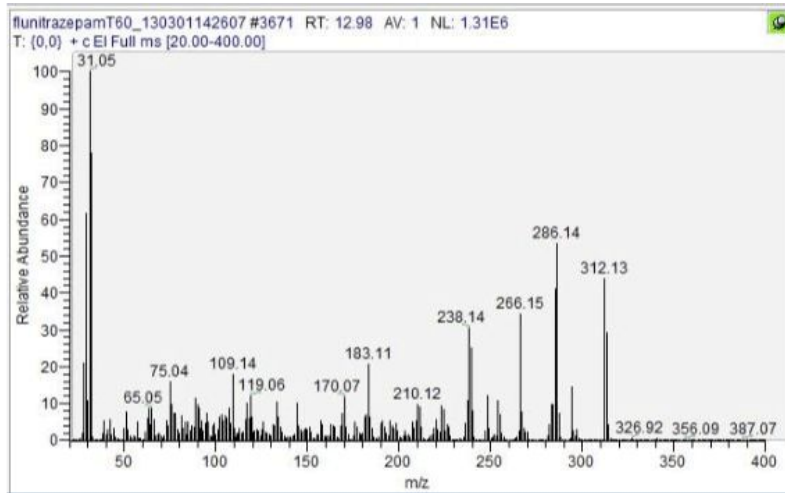


# How is it Analyzed?

a solid-phase extraction cartridge containing a "mixed-mode" bonded silica gel flunitrazepam and its metabolites were selectively isolated from other urine components and quantitated and identified by gas chromatography-tandem mass spectrometry with a benchtop ion mass spectrometer.

---

# Results



# What is the penalty for possessing Rohypnol

---

- Simple possession: faces a prison term of not more than three years, a fine of not less than \$5,000, or both.
- Possession with intent to distribute: The prison term is increased to not less than 20 years and up to a life sentence where the crime resulted in death or serious bodily injury to another person. Or a fine up to \$4,000,000

# Work Cited

— — —  
<http://www.drugs.com/illicit/rohypnol.html>

<http://www.drugfree.org/drug-guide/rohypnol/>

[http://www.rossfordschools.org/pages/uploaded\\_files/g4%20blake%20romstadt.pdf](http://www.rossfordschools.org/pages/uploaded_files/g4%20blake%20romstadt.pdf)

<http://schoolworkhelper.net/rohypnol-facts-effects-symptoms/>

<http://rohypnolabusreatment.com/drug-paraphernalia-associated-with-rohypnol>

<http://www.criminaldefenselawyer.com/resources/criminal-defense/drug-charges/possession-rohypnol-a-criminal-case>

<http://www.drugs.com/illicit/rohypnol.html>

<http://www.medicaldaily.com/could-date-rape-be-prevented-fashion-nail-polish-changes-color-presence-rohypnol-299598>