

Peyote



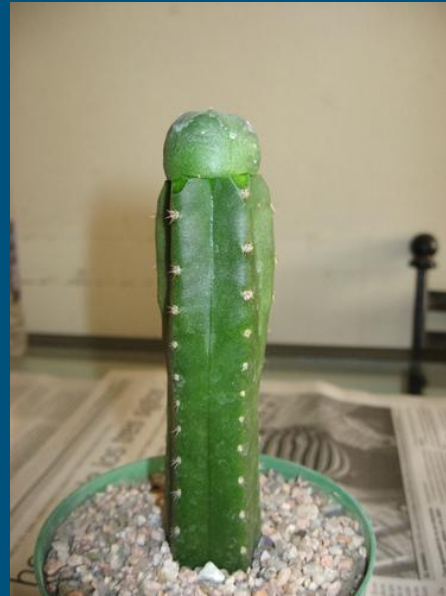
Jorge Perez
Pd 2

What is Peyote?

Number of different species of cactuses that produce mescaline, the key ingredient in Peyote

Peyote often grows in groups of cactuses close to the ground

Chew on plant or boil it



Short Term Effects

Specific short-term effects of some hallucinogens include:

- increased blood pressure, breathing rate, or body temperature
- loss of appetite
- dry mouth
- sleep problems
- mixed senses (such as "seeing" sounds or "hearing" colors)
- spiritual experiences
- feelings of relaxation or detachment from self/environment
- uncoordinated movements
- excessive sweating
- panic
- *paranoia*—extreme and unreasonable distrust of others
- *psychosis*—disordered thinking detached from reality

Long Term Effects

long-term effects that may continue for a year or more after use stops,
such as:

- speech problems
- memory loss
- weight loss
- anxiety
- depression and suicidal thoughts



Plants may be different colors including:

- Blue, green, yellow and combinations of red and green

Also there could also be yellowish or whitish hairs with no spines

Consumption of 10-20 grams of dried peyote produces a wide range of effects including

- Hallucinations, metaphysical insight or spiritual introspection.

Uses

Peyote is unsafe for use. It can cause nausea and vomiting, anxiety, paranoia, fear, and emotional instability. It can also raise blood pressure, heart rate, and respiration rate. Changes in vision, drooling, headache, dizziness, and drowsiness may also occur. Although it is rarely fatal, peyote can cause homicidal, psychotic, or suicidal behavior related to the hallucinations.

Stimulant drugs speed up the nervous system. By speeding up the nervous system, stimulant medications can make you feel jittery and speed up your heartbeat.

Peyote might also speed up the nervous system. Taking peyote along with stimulant drugs might cause serious problems including increased heart rate and high blood pressure. Avoid taking stimulant drugs along with peyote.

Mescaline



Is found in
hallucinogenic drugs
such as Peyote, and can
cause dangerous long
term effects

Main ingredient in the
Peyote Plant

Consumption



No paraphernalia needed,
you can bite into it or dry it up
then eat it

The appropriate dose of
peyote depends on several
factors such as the user's
age, health, and several
other conditions.



Can also be boiled into a tea. Used by many native rituals and by people today

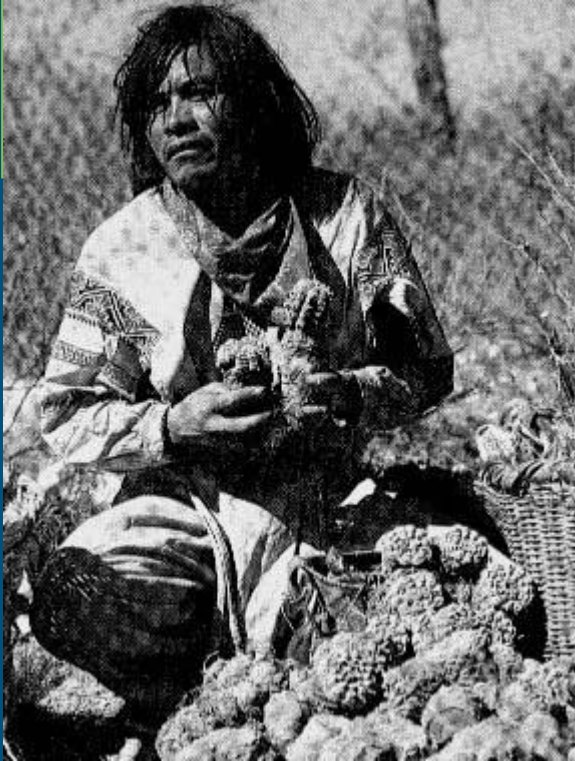




Despite serious safety concerns, Peyote is used for treating fevers, joint pain and paralysis

People apply peyote to the skin for treating fractures, wounds and snakebite

Photo of an addict



Legality of Peyote

Recreational use of peyote is prohibited in all of the states and territories and by federal law. Recreational users of peyote may face large fines or even jail time if caught. Additionally, the sale and production of peyote for non-religious purposes is also against the law in the United States. Although not discovered nearly as often, peyote growers are usually treated the same way by law enforcement as marijuana growers.

Works Cited

-Peyote." *Hallucinogens.com*. N.p., n.d. Web. 05 Apr. 2017.

-PEYOTE: Uses, Side Effects, Interactions and Warnings." *WebMD*. WebMD, n.d. Web. 05 Apr. 2017.

-"Is Peyote Legal? Learn the Legality Of Peyote at Peyote.net." *Is Peyote Legal? Learn the Legality Of Peyote at Peyote.net*. N.p., n.d. Web. 05 Apr. 2017.